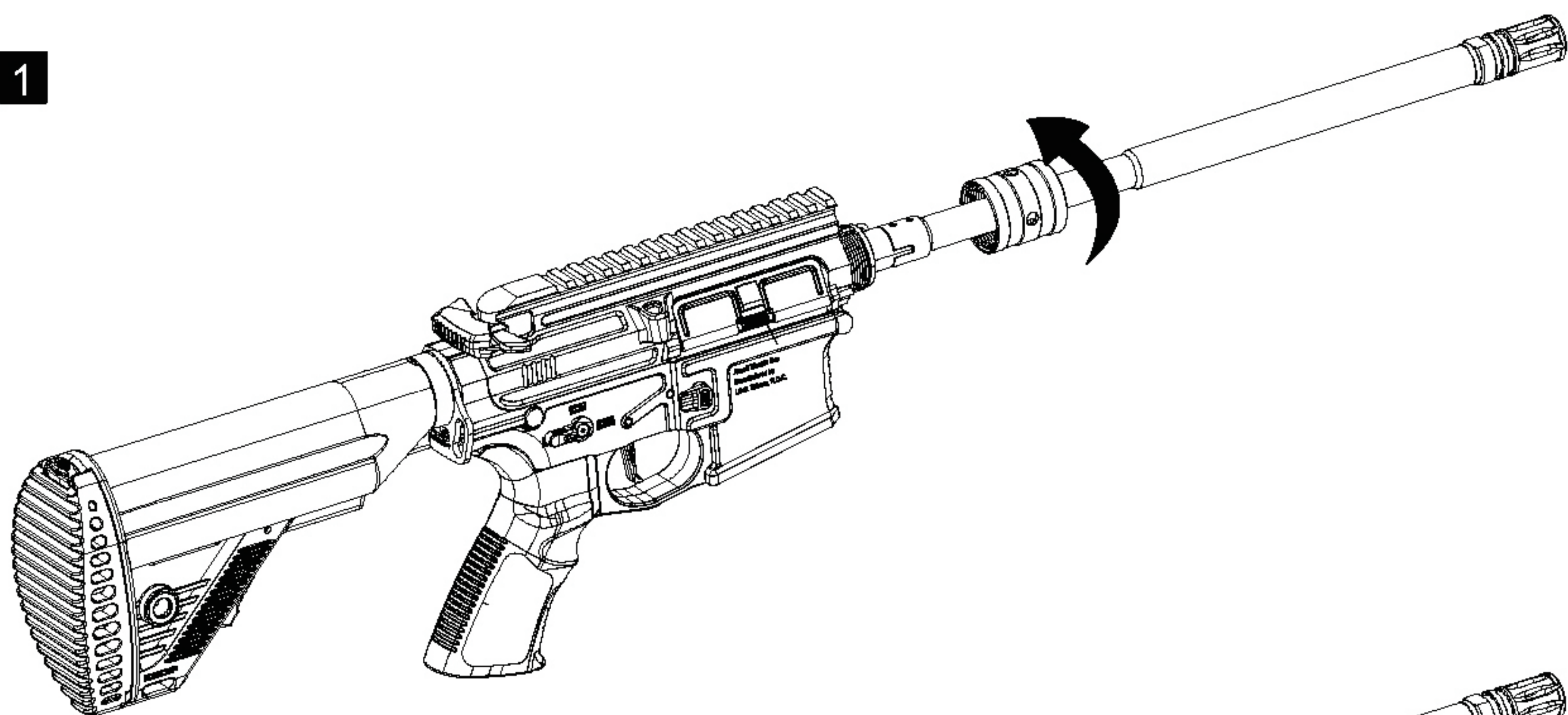


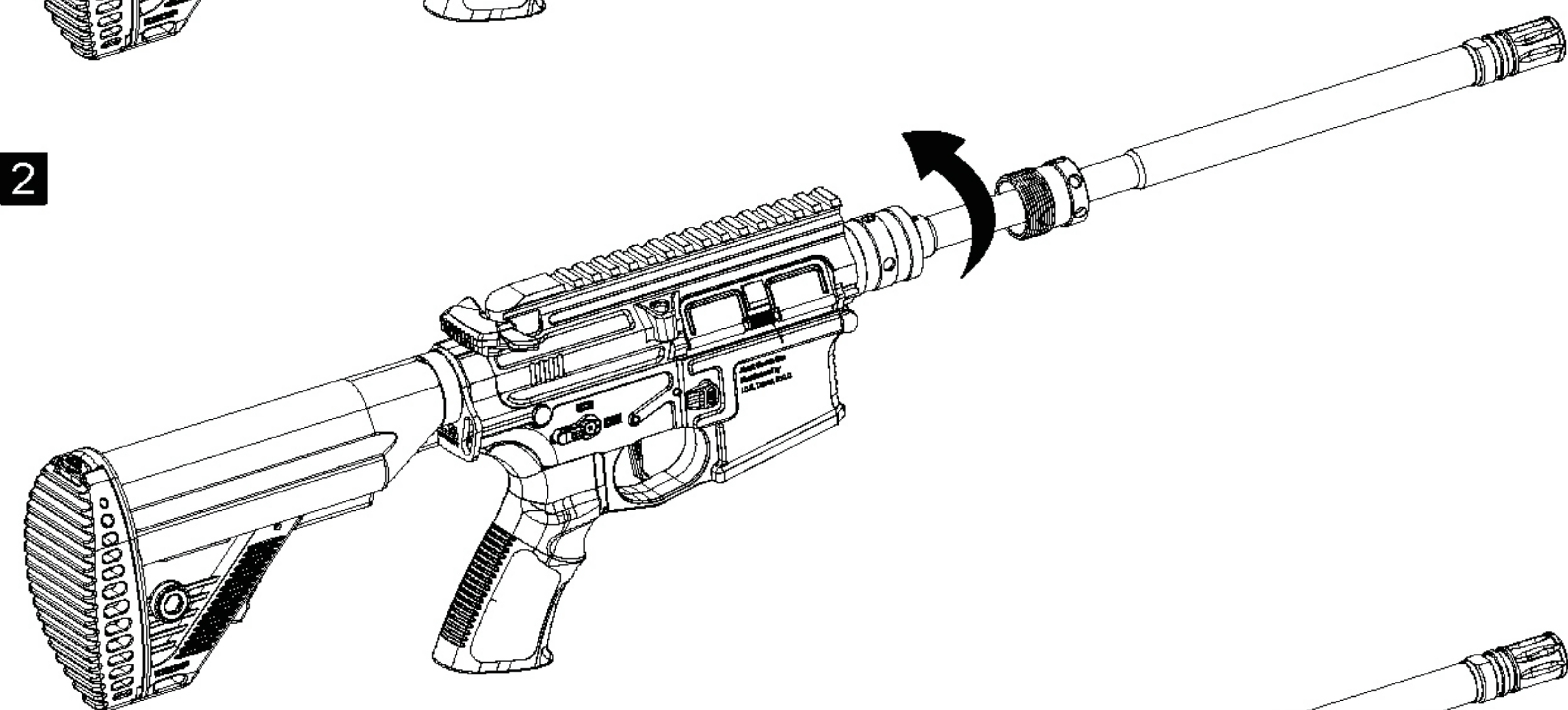
CXP MARS HANDGUARD

1



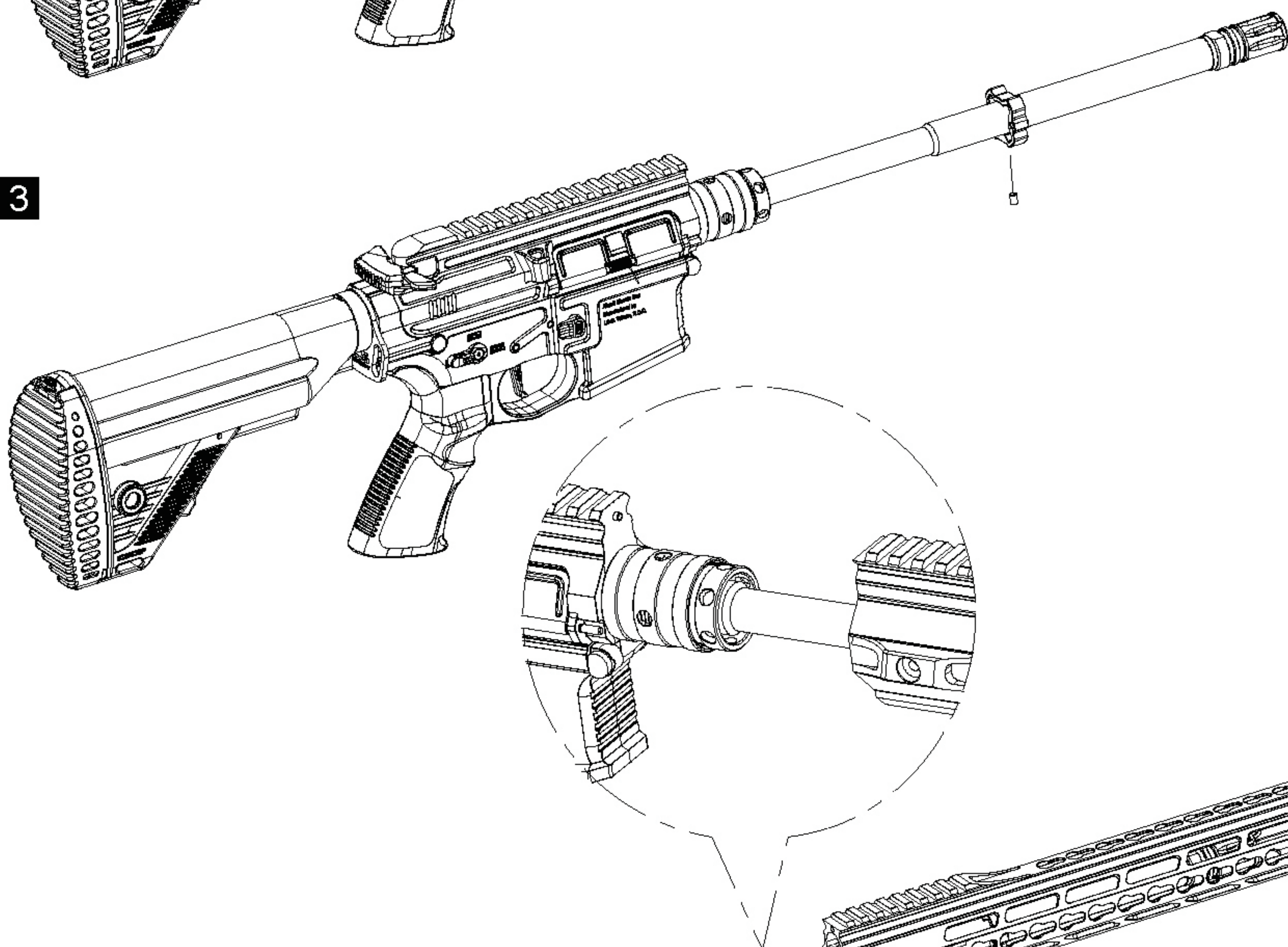
1.先安裝護木後段鎖緊
Fasten the handguard ring.

2



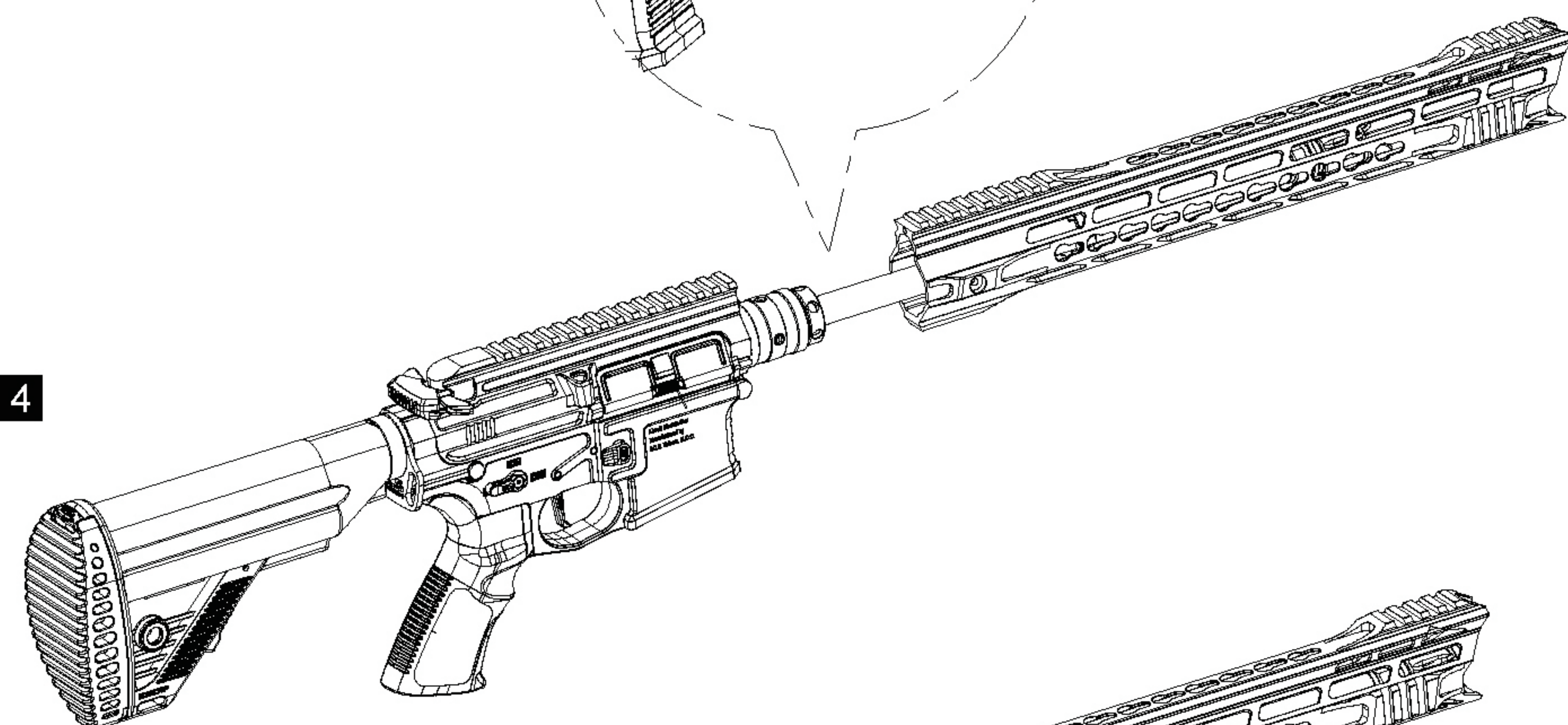
2.星狀環將槍管鎖固
Fasten the barrel ring.

3



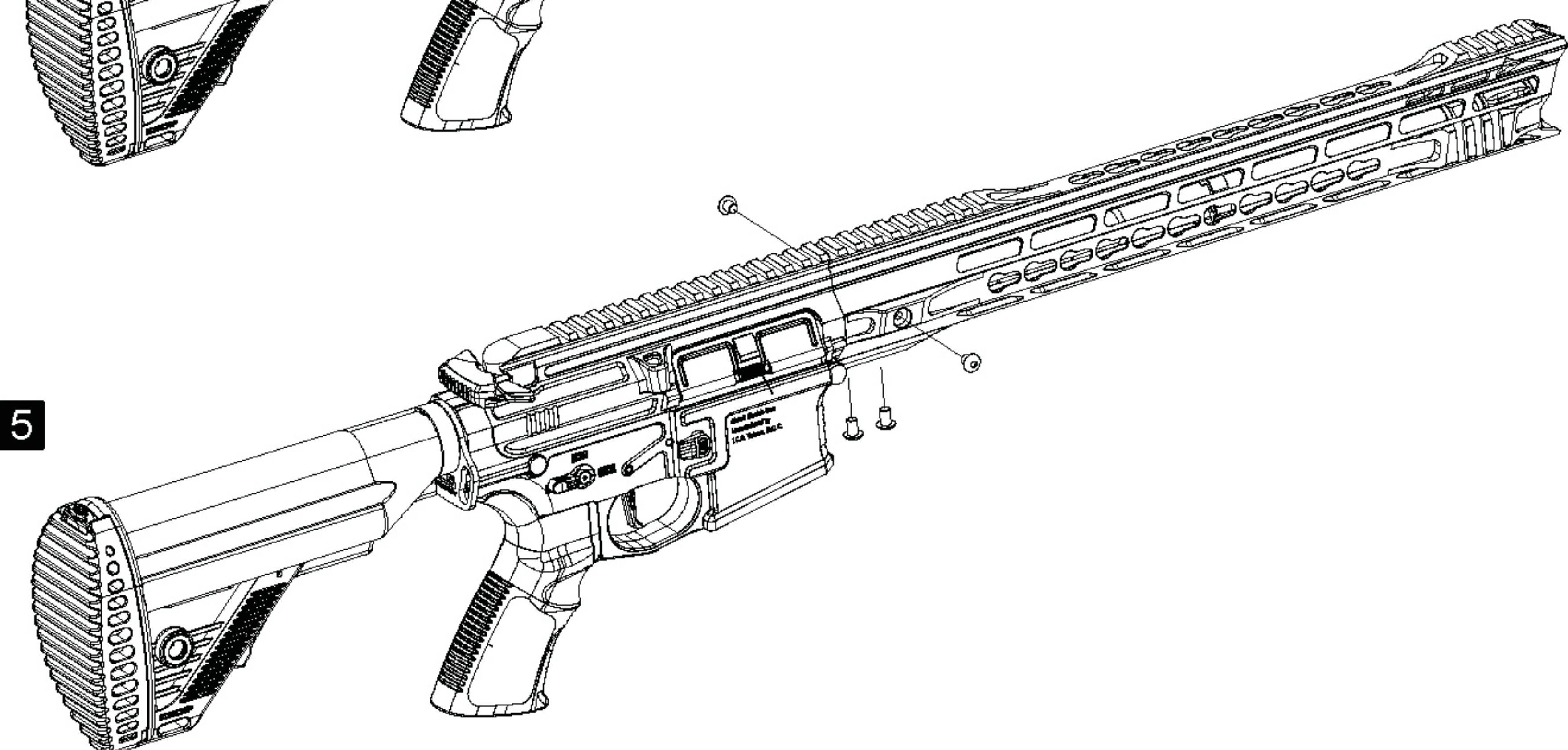
3.套入護木固定環，
鎖緊下方止付螺絲
Insert the handguard retainer to
the barrel and then fasten the
hex screw.

4



4.護木與槍身定位結合
Insert the handguard in place.

5



5.將螺絲鎖固
Fasten the handguard screws.