



CO₂ POWERED ENERGY MAX 1.3J
Muzzle Velocity 100m/s (328FPS)
HI-CAPA LEGACY

Please read the [Instruction Manual] carefully and make full understanding of the details noted in the contents before use.

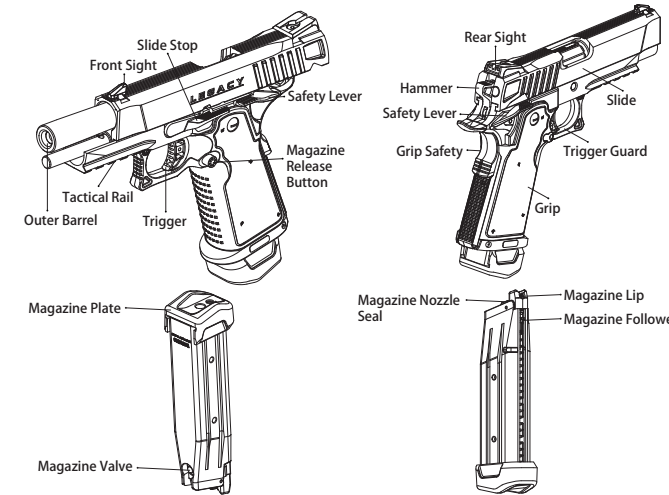
WARNING

- To avoid damaging the product, please release the gas from the magazines or cartridges while not operating.
- Sales and usage are restricted to 18-year-old people or older. Those below 18 years old are not allowed neither to purchase nor to operate alone.
- Never aim or shoot at people or animals. Please beware of childrens' mis-handling.
- Please read and fully understand all details listed in this instruction manual before using this air gun. You can download it from www.icsbb.com if you lose this instruction manual.

6mm BB



1 PART DESCRIPTION



WARNING-ATTENTION

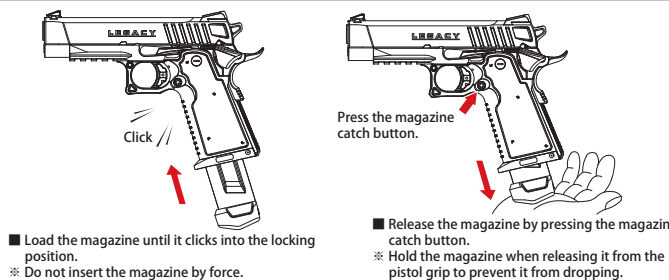
This model is featured with Gas-Blow-Back function. The slide will be pushed backward by the gas pressure strongly and rapidly while firing. To prevent injury, please keep your face and finger away from the slide.

The pistol could be damaged when using at temperature of 30°C (86°F) or above.

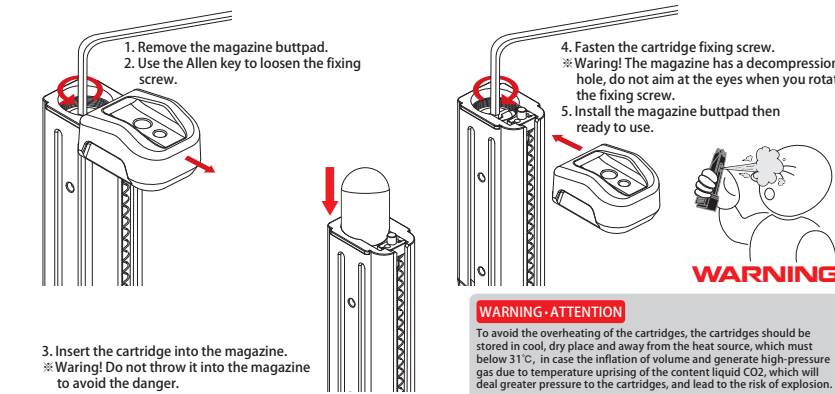
2 SAFETY DEVICE



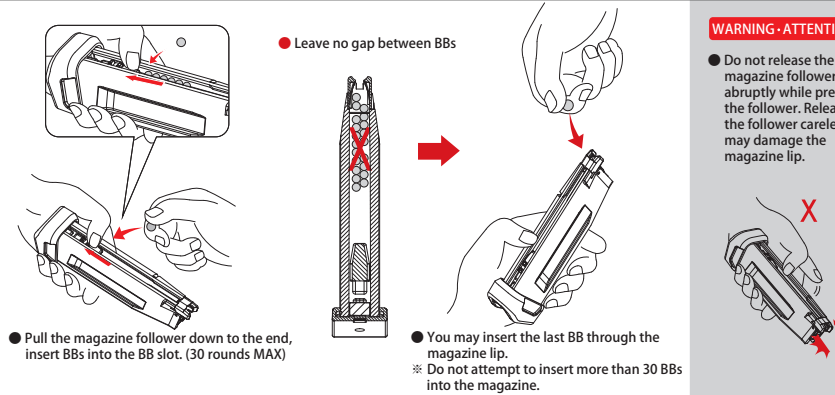
3 LOADING MAGAZINE



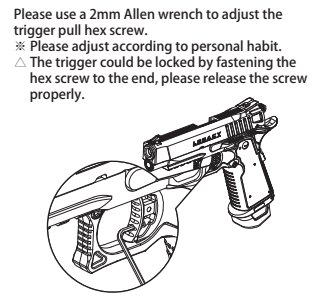
4 CO2 CARTRIDGE INSTALLATION



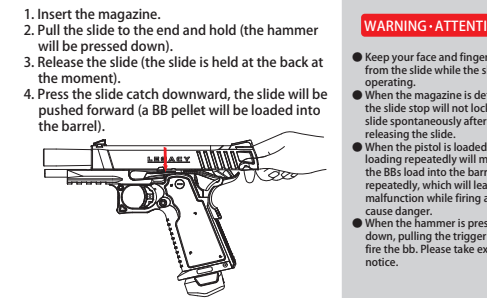
5 LOADING BBs



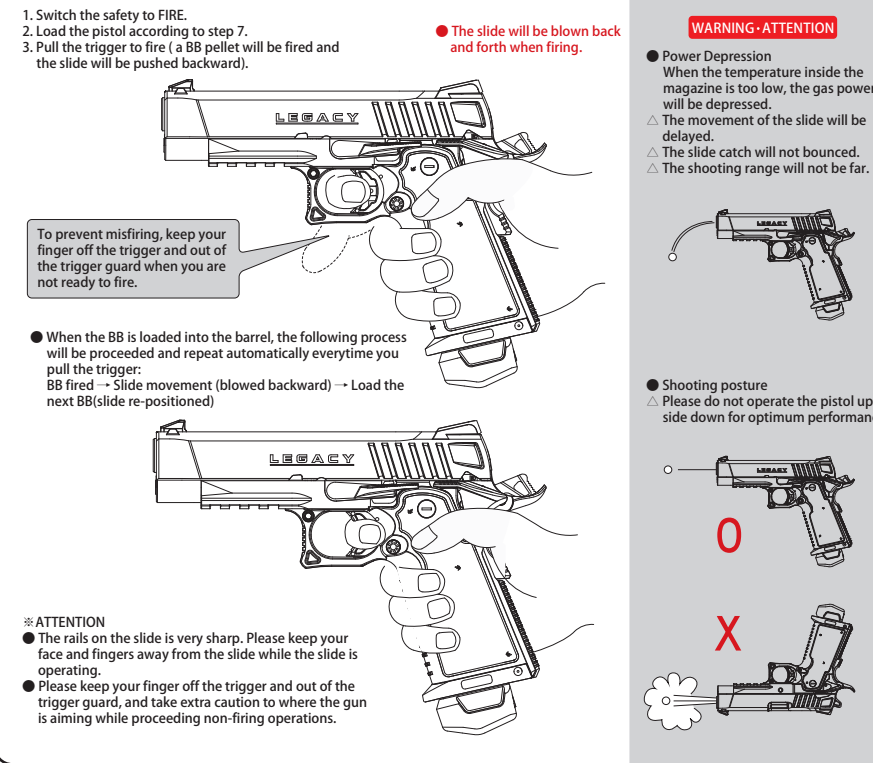
6 Trigger Pull Adjustment



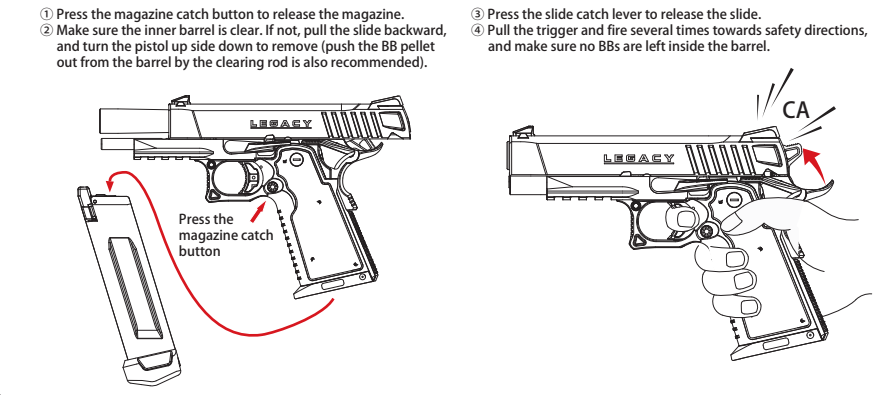
7 Loading



8 SHOOTING



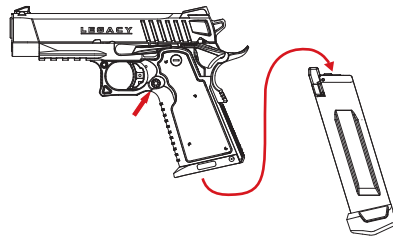
9 STORAGE



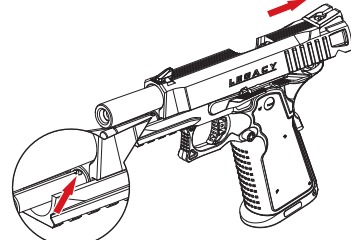
10 DISASSEMBLY (Do it when necessary)

Only disassemble your airsoft replica when adjusting the H-UP and proceeding to maintenance.

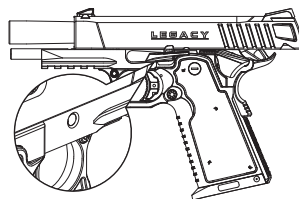
① Press the Magazine Release Button to unload the magazine.



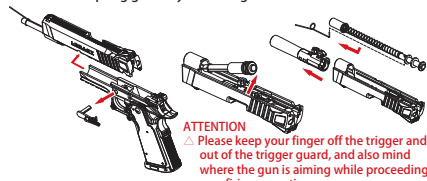
② Pull back the slide and press the slide stop upward to lock it.
③ Insert the dedicated tool into the hole on the recoil spring guide as shown.



④ Push the Slide backward and align the notch corresponds to the slide stop as shown.



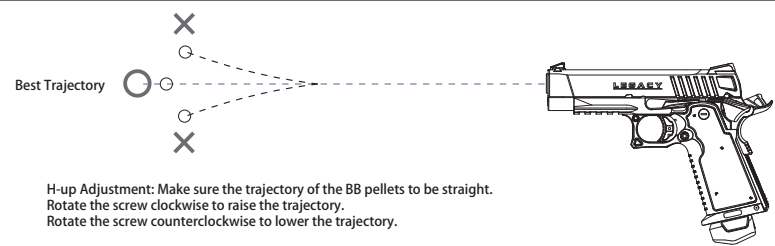
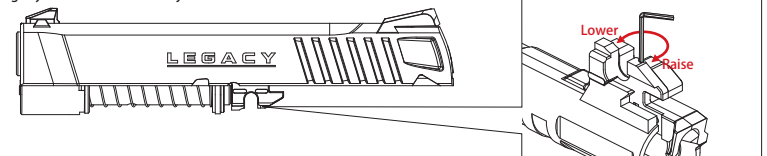
⑤ Press the slide stop button on the right to remove it.
⑥ Push the slide forward to detach it. Meanwhile, The recoil spring guide set is contained.
⑦ The recoil spring guide set can be easily removed by slightly pushing it forward and taking it out.
⑧ Push the outer barrel set forward to remove. You may disassemble the recoil spring guide by detaching the dedicated tool if necessary.



ATTENTION
△ Please keep your finger off the trigger and out of the trigger guard, and also mind where the gun is aiming while proceeding non-firing operations.
△ Watch out for the rod may bounce out of the recoil spring guide set.

11 H-UP ADJUSTMENT

① Please disassemble and remove the slide as step 10 instructed.
② Slightly rotate the screw to adjust the H-UP.

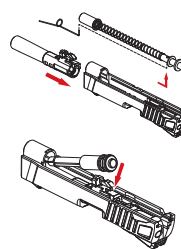


H-up Adjustment: Make sure the trajectory of the BB pellets to be straight. Rotate the screw clockwise to raise the trajectory. Rotate the screw counterclockwise to lower the trajectory.

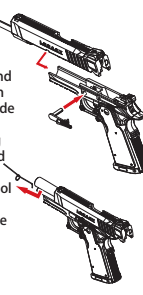
12 ASSEMBLY

※ Please check the following status before assembly:
△ The hammer must be down pressed.

① Insert the dedicated tool into the hole on the rod and reverse Step 10, to assemble the recoil spring guide set.
② Assemble the outer barrel set by pushing it back into the slide.
③ Assemble the recoil spring guide set to the slide.



④ Assemble the slide to the receiver from the front and insert the slide stop when the notch is aligned to slide stop's corresponding position. The recoil spring guide set is still contained by now.
⑤ Remove the dedicated tool after you lock back the slide, then press down the slide stop to release.



WARNING · ATTENTION

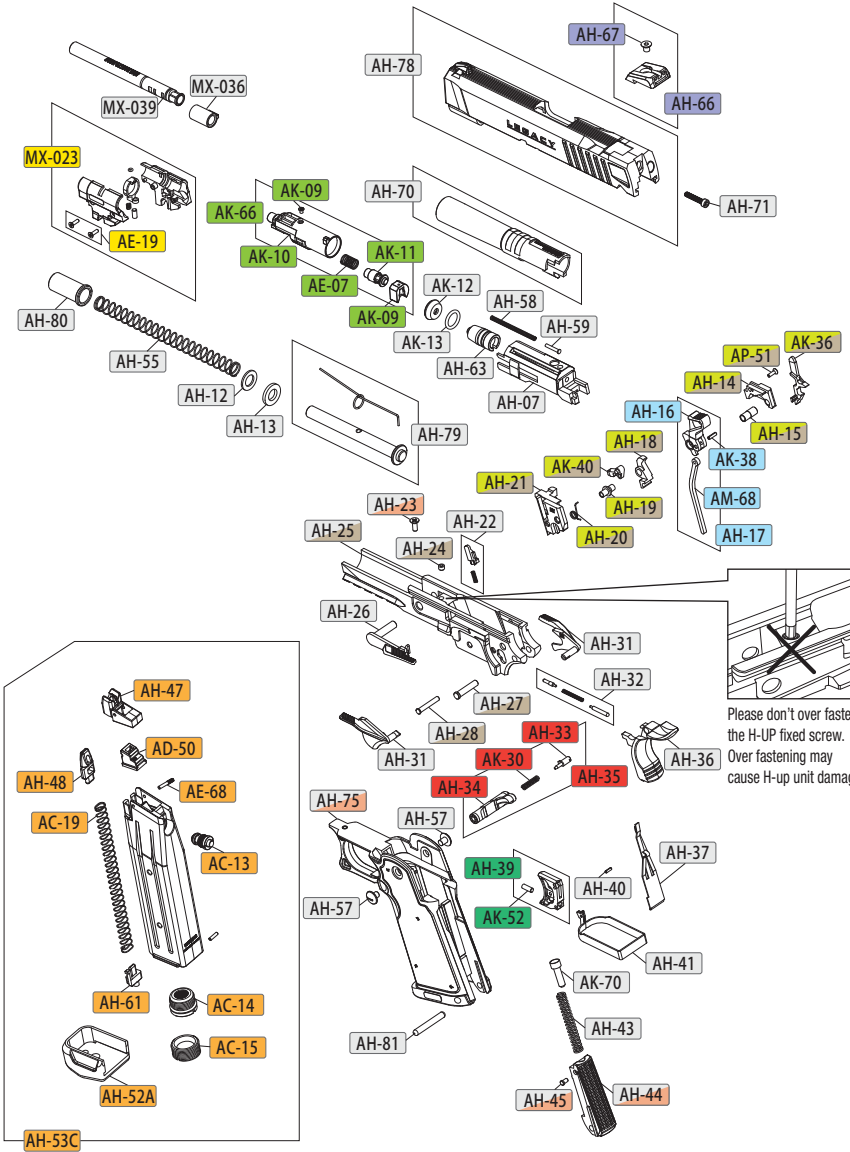
● ICS will not be responsible for any part assembling errors, missing parts, and issues such as malfunctions, accidents, injuries. All the maintaining expenses will be borne by the customers.

13 BASIC TROUBLESHOOTING GUIDE

SYMPTOMS	POSSIBLE CAUSE	SOLUTIONS
No response	The safety is ON. (No firing)	Switch the safety to "OFF". (refer to step 2)
	Insufficient gas in the cartridge	Replace a new cartridge after confirming the cartridge is empty (refer to step 7, item 4 and step 4)
CO2 comes out from the barrel	Temperature is too low. (during the winter)	Reheat the cartridge to room temperature.
	Cartridge over-pressured	It will return normal after firing several times.
BBs fly up	H-UP is over adjusted.	Adjust the H-UP screw clockwise. (refer to step 9)
Shooting range is too short	H-UP is not enough.	Adjust the H-UP screw counter-clockwise. (refer to step 9)
	Foreign matters or oil in the inner barrel.	Clean the inner barrel and H-UP bucking.
	Cartridge over-pressured.	It will return normal after firing several times.
BBs roll out of barrel	H-UP is not enough.	Adjust the H-UP screw counter-clockwise. (refer to step 9)
Jammed	H-UP is over adjusted.	Adjust the H-UP screw clockwise. (refer to step 9)
	Bad BBs, oversize BBs	0.2g to 0.25g 6mm caliber BBs are recommended for optimum performance.
Trigger cannot be pulled.	Foreign matters or oil in the inner barrel.	Clean the inner barrel.
	BBs or foreign matters jam inside the case.	Take out the BBs or foreign matters.
CO2 leaking from perforated seat	Bad installation of the cartridge	Replace a new cartridge after confirming the cartridge is empty.(refer to step 7, item 4 and step 4)
	Not enough silicon oil for perforated seat .	Grease the perforated seat.
Magazine lip cannot hold the BBs.	Magazine lip abraded	Replace the Magazine lip.

14 PARTS DIAGRAM

*The components/accessories for each model may have kind of differences depending on the actual goods. Images are only for reference.



15 PARTS DESCRIPTION

ITEM#	DESCRIPTION	Q'TY	ITEM#	DESCRIPTION	Q'TY
AH-07	Hi-Capa Cylinder Housing	1	AH-79	4.3" Hi-Capa Recoil Spring Rod with Reverse Plug Retention Clip	1
AH-11	Hi-Capa Recoil Spring	1	AH-80	4.3" Recoil Spring Guide	1
AH-12	Hi-Capa Shock Buffer Washer	1	AH-81	Hammer Housing Pin (Short)	1
AH-13	Hi-Capa Shock Buffer Rubber	1	AC-13	CO2 Valve	1
AH-14	Hi-Capa Hammer Housing-Right	1	AC-14	CO2 Cylinder Perforated Seat	1
AH-15	Hi-Capa Hammer Sleeve	1	AC-15	CO2 Cylinder Housing Screw	1
AH-16	Hi-Capa Hammer	1	AH-17	Hi-Capa Hammer Combination	1
AH-18	Hi-Capa Sear	1	AD-50	XPD Magazine Nozzle Seal	1
AH-19	Hi-Capa Sear Sleeve	1	AE-07	XAE Valve Spring	1
AH-20	Hi-Capa Hammer Knocker Spring	1	AE-19	XAE H-UP Chamber Screw	2
AH-21	Hi-Capa Hammer Housing-Right	1	AE-68	XAE Magazine Lip Pin	1
AH-22	Hi-Capa Hammer Disconnect with Spring	1	AE-70	XAE Magazine Follower Spring	1
AH-23	Hi-Capa Middle Frame Screw	1	AK-09	Vulture Valve Cover with Screw	1
AH-24	Hi-Capa H-UP Fixed Screw	1	AK-10	Vulture Cylinder	1
AH-25	Hi-Capa Middle Frame	1	AK-11	Vulture Valve	1
AH-26	Hi-Capa Slide Release	1	AK-12	Vulture Valve Plate	1
AH-27	Hi-Capa Hammer Pin	1	AK-13	Cylinder Cover Housing O-Ring	1
AH-28	Hi-Capa Sear Pin	1	AK-30	Vulture Magazine Catch Spring	1
AH-29	Hi-Capa Middle Frame Combination	1	AK-36	Vulture Hammer Disconnect Pin	1
AH-30	Hi-Capa Hammer Housing Combination	1	AK-38	Hammer Brace Rod Pin	1
AH-31	Hi-Capa Slide Safety	1	AK-40	Vulture Hammer Knocker	1
AH-32	Slide Release Pin and Spring	1	AK-52	Vulture Trigger adjustment Screw	1
AH-33	Hi-Capa Magazine Catch Lock	1	AK-66	Vulture Cylinder Combination	1
AH-34	Hi-Capa Magazine Catch	1	AK-70	Vulture Hammer Spring Holder	1
AH-35	Hi-Capa Magazine Catch Combination	1	AM-68	BM9 Hammer Brace Rod	1
AH-36	Hi-Capa Grip Safety	1	AP-51	PM2 Magazine Cover Screw	1
AH-37	Hi-Capa Sear Spring	1	MX-023	Master Hi-Capa TDC Hop Chamber	1
AH-39	Hi-Capa Trigger	1	MX-036	Master Ver.2 R-Hop Chamber Rubber	1
AH-40	Hi-Capa Trigger Bar Pin	1	MX-039	Master Inner Barrel 97mm	1
AH-41	Hi-Capa Trigger Bar	1			
AH-42	Hi-Capa Magwell & Pin	1			
AH-43	Hi-Capa Hammer Spring	1			
AH-44	Hi-Capa Hammer Spring Housing	1			
AH-45	Hi-Capa Hammer Spring Lock Pin	1			
AH-47	Hi-Capa Magazine Lip	1			
AH-48	Hi-Capa Magazine Follower	1			
AH-52	Hi-Capa Magazine Plate	1			
AH-53C	Hi-Capa CO2 Magazine-30rds	1			
AH-55	Hi-Capa Recoil Spring	1			
AH-57	Hi-Capa Grip Screw	2			
AH-58	Hi-Capa Cylinder Housing Spring	1			
AH-59	Hi-Capa Cylinder Housing Spring Pin	1			
AH-61	Hi-Capa CO2 Magazine Plate Stop	1			
AH-63	Hi-Capa Cylinder Cover Housing	1			
AH-66	Hi-Capa 4.3 Rear Sight	1			
AH-67	Hi-Capa 4.3 Rear Sight Screw	1			
AH-70	4.3" Hi-Capa Outer Barrel-BK	1			
AH-71	Hi-Capa Cylinder Housing Screw	1			
AH-75	Hi-Capa Stippled Grip	1			
AH-76	Hi-Capa Stippled Grip Combination	1			
AH-78	LEGACY Slide with Front Sight Combination	1			